

PushShare Dongle (PSDV2) and Receiving Unit (PSRV2)



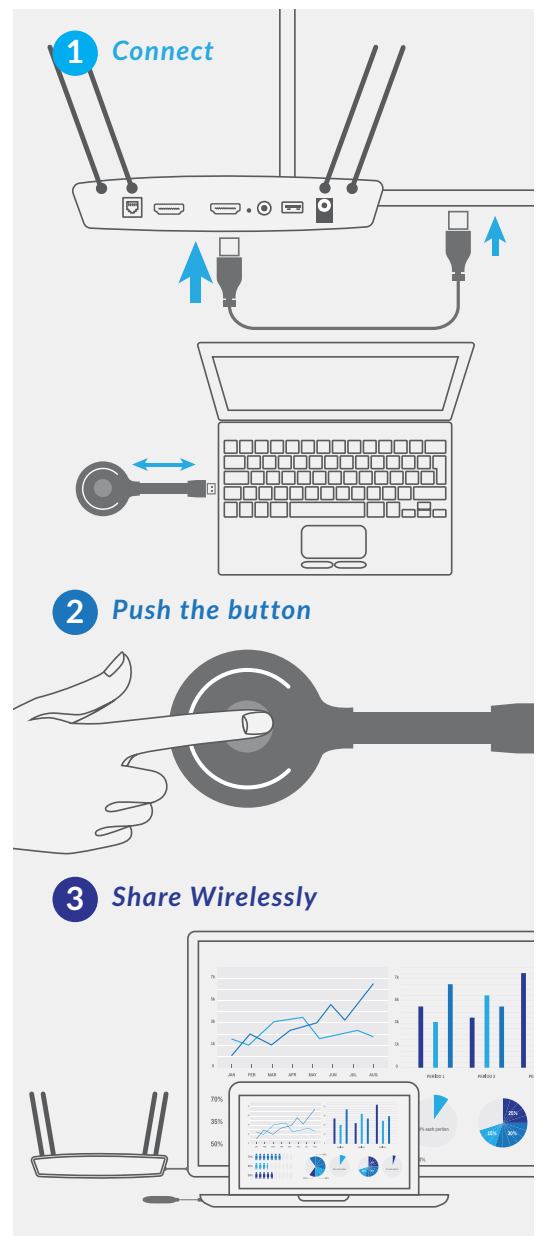
Simple Wireless Mirroring

PushShare enables smooth collaboration during meetings by allowing participants to wirelessly mirror their devices to any presentation screen or projector for more productive meetings. Connect the Receiving Unit to your presentation screen and the dongle to your device, and then a simple push of the button will start wirelessly sharing the device's display to your presentation screen. This simple system suits user behaviour so anyone can use it without the need for any installation or training - maximising the return on your investment.



Universal Compatibility

Bring Your Own Device! PushShare enables users connect wirelessly to your presentation screen in seconds using any device that can output a HDMI signal, such as Windows or Mac laptop or PC. This truly is a fully agnostic solution.



Other Features

High Security Protection

The connection between the PushShare dongle and your Receiving Unit is fully password protected. PushShare is able to be seamlessly integrated into any IT network as it uses the hotspot network created by the Receiving Unit. Users can be sure that their mirroring is protected and secure between the devices.



Easy Integration with Existing hardware

The PushShare Receiving Unit was designed for easy integration with existing hardware. Just connect via HDMI (or VGA and 3.5mm audio) to legacy equipment and experience the full power of PushShare.



Multi-Screen Mirroring

With multiple PushShare dongles up to nine separate devices can connect to the same Receiving Units simultaneously. This is ideal for collaborative meetings that also require interactivity.



Share Content From Mobile Devices

The free PushShare app enables users to wirelessly mirror from mobile devices and tablets to the Receiving Unit in the same way as when using the traditional PushShare dongle. The user friendly app is compatible with both iOS and Android devices.



		PushShare Receiving Unit
Connections	Ports	USB 2.0 x2, USB-Type C x1, LAN
	Inputs	HDMI
	Outputs	HDMI, Audio
Support	Sending Devices Supported	Any display with HDMI input
	*Receiving Devices Supported	PushShare dongles (PSDV1, PSDV2)
	Touch Control	16-point touch via Windows: 7/8.1 and 10, 1-point touch via macOS X 10.10,10.11,10.12,10.13 and 10.14,Airplay iOS: 9,10, 11, 12, Android 5.0 or higher (need to install PushShare APK)
Audio Visual	Resolution - 1 Display	1920x1080 (P30)
	Resolution - 4 Displays	3840x2160 (P30)
	Simultaneous Connections	1-9
	Audio	44.1KHz/48KHz/16bit PCM (Stereo)
Wireless Transmission	Protocol	802.11ax, 802.11ac, 802.11n
	Rate	867Mbps
	Distance	~50m
	Frequency Band	2.4 GHZ and 5 GHZ
	Authentication Protocol	WPA2-PSK
	Average Transmission Delay	<150ms
	Power	Power Consumption
Mechanical	Unit Size (WxHxD mm)	180x110.9x40
	Net Weight (Kg)	TBC
	Package Size (WxHxD mm)	TBC
	Gross Weight (Kg)	TBC
Environmental	Operating Temperature	+5°C ~ +40°C
	Storage Temperature	-20°C ~ +60°C
	Operating Humidity	0 ~ 90%
	Storage Humidity	0 ~ 90%
Accessories	Included	Wi-Fi aerial x 2, HDMI cable x1 (540mm), Power plug and cable
Warranty	Warranty Period	3 Years
	Technical Support	Lifetime

Why Choose Our Commercial Display Solutions?



Lifetime Technical Support

From the moment you receive your product, throughout the duration of your warranty and even after your warranty has expired we are here to support you. If you require any assistance setting up or using your product, or have any problems at all, we can provide free technical support via telephone and email.



On-site Support and Maintenance*

If needed, we can provide an installation service for any of our products. We can also set up service-level agreements for larger projects that require maintenance contracts.



Extended Warranty*

All of our commercial display products come with a 3 year commercial warranty as standard but if you want to extend this you can upgrade this to cover a 5 year period at point of purchase.



Training

As well as providing free remote CMS training sessions and webinars we can also visit you to deliver bespoke training for our software and hardware*.



Advanced Replacements†

Should your display suffer from any kind of hardware failure during the warranty period we will send you an advanced replacement and arrange for your old display to be collected, free of charge. This ensures no downtime where you are without a screen.



Custom Product Testing & Configuration

If you need us to test third party software or a website, or configure your screen in a particular way before it is dispatched (e.g. in a particular orientation or network mode), we can do so to make your life easier.



3D Rendering

Want to know how a particular screen will look once installed? Send us a photo of the location and we will create a 3D rendering of any screen in situ to help you to visualise how amazing it will look.



Logistics Support

We hold more stock in our UK warehouse than any other manufacturer so we can help you meet tight deadlines. For last minute orders we can also offer special express or morning delivery options*. We also carry out UK based quality control checks on every display before it leaves our warehouse.



Project Support

If you need to loan a sample unit to test we'd be more than happy to arrange this. We can also provide a rental service for temporary projects*.



Customisation*

Your display can be customised to suit your requirements by adding your logo or printed graphics or even tailoring the colour of a display. We can also carry out hardware modifications to existing products or manufacture bespoke solutions for special projects.



Extras*

As well as being able to provide accessories and add-ons, such as extra remote controls, NUC PCs and video wall controllers, we can also supply custom made flight cases which are great if a display needs to be moved safely from place to place.

†UK mainland only

*These particular services may incur additional charges